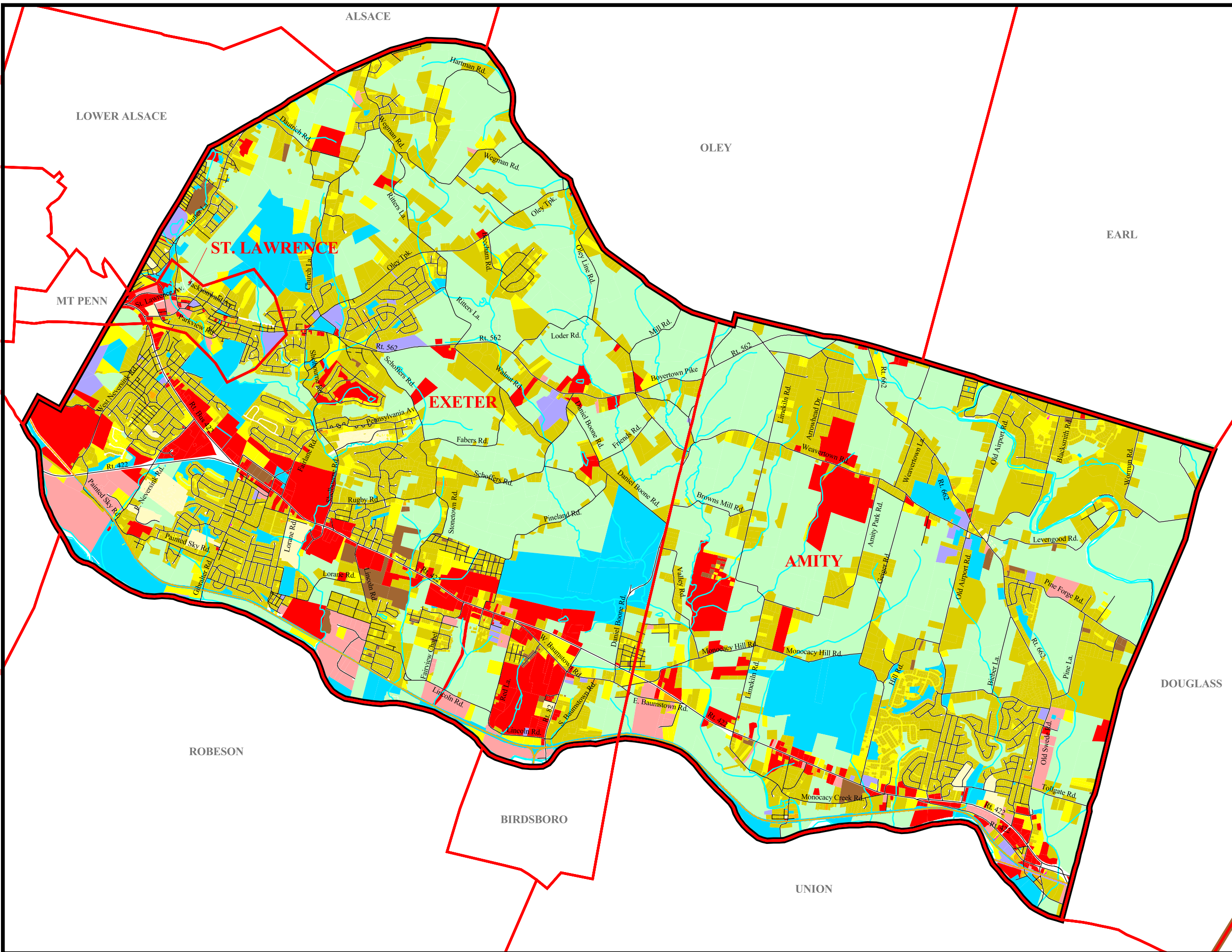


*Existing Land Use Map,
The Joint Comprehensive Plan
For St. Lawrence, Exeter and Amity,
Berks County*



- Existing Land Use
- Railroads
 - Commercial
 - Farm (includes Farmland & Woodland)
 - Industrial
 - Institutional
 - Public
 - Residential Single Family
 - Residential 2 to 4 Family
 - Residential Multi Family
 - Mobile Home
 - Residential/Commercial Mixed Use
 - Open



Data source: Berks County GIS and SSM



Spotts, Stevens and McCoy, Inc.
1047 N. Park Rd.
Reading, PA 19610-0307
Tel: 610-621-2000 Fax: 610-376-6950

09/13/01

g:\projects\w6000\w6128\
w6128004\projects\
w6128_004.apr