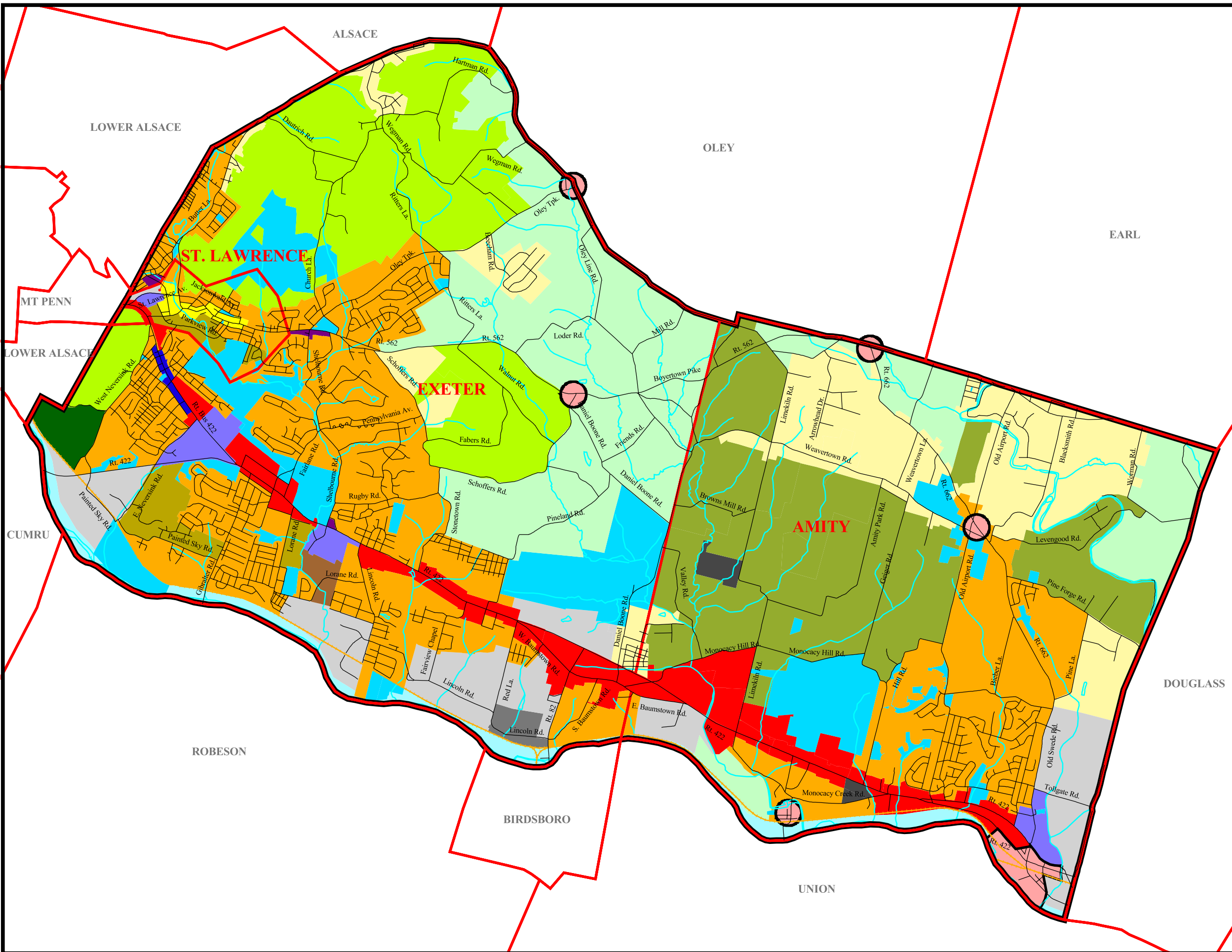


**Future Land Use Plan,  
The Joint Comprehensive Plan  
For St. Lawrence, Exeter and Amity,  
Berks County**



- Future Land Use**
- General Industrial (GI)
  - Light Industrial / Office (LI/O)
  - Highway Commercial (HC)
  - Neighborhood Commercial (NC)
  - High Density Residential (HDR)
  - Medium Density Residential (MDR)
  - Low Density Residential (LDR)
  - Office Park (OP)
  - Restricted Office / Commercial
  - Public (P)
  - River Conservation (RIVC)
  - Agricultural Preservation (AGP)
  - Rural / Institutional (RI)
  - Rural Conservation (RC)
  - Rural Preservation (RP)
  - Shopping Center Commercial (SCC)
  - Town Center (TC)
  - Mobile Home Park

Rural Village



Data source: Berks County GIS and SSM



**Spotts, Stevens and McCoy, Inc.**  
1047 North Park Road  
Reading, PA 19610-0307  
Tel: 610-621-2000 Fax: 610-376-6950

10/12/05

g:\projects\w6000\w6128\  
w6128004\projects\  
w6128\_004.apr