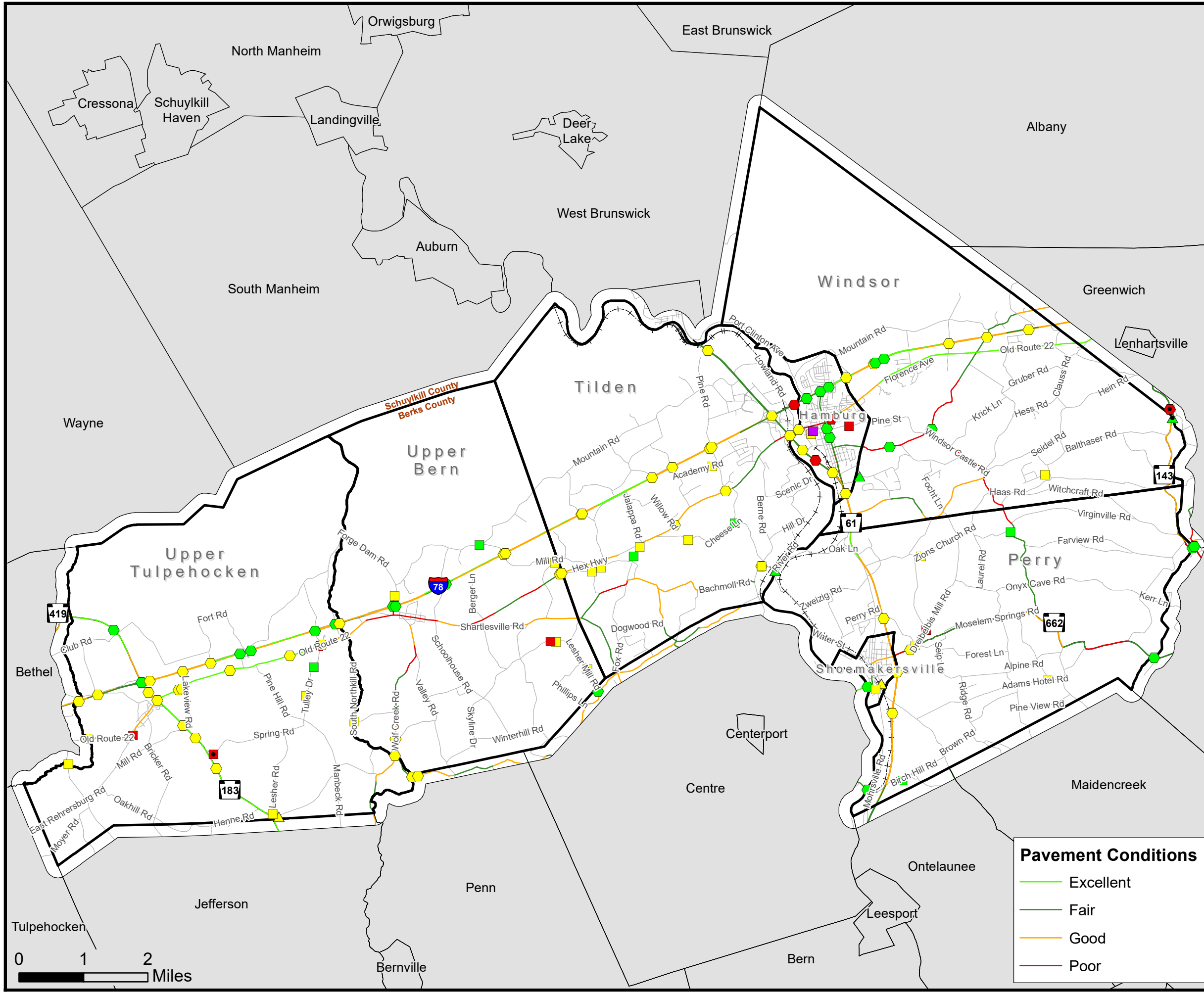
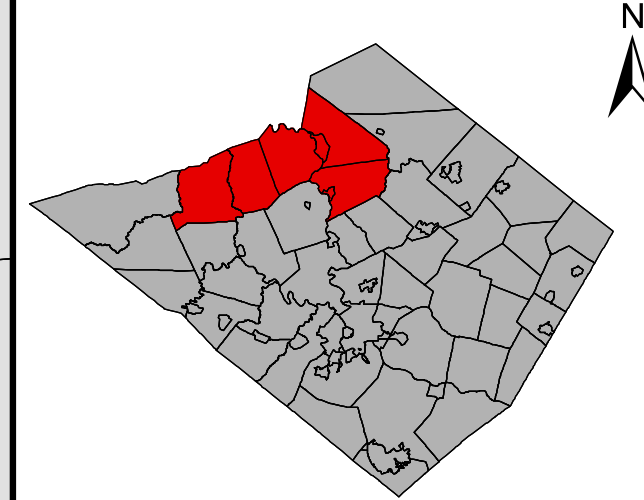


Hamburg, Perry, Shoemakersville, Tilden, Upper Bern, Upper Tulpehocken, Windsor  
Joint Comprehensive Plan Update: June 2022

# Bridge and Pavement Conditions



## Legend

- State Bridges
- △ County Bridges
- Municipal Bridges
- Posted Bridges
- Bridge Condition: Good
- Bridge Condition: Fair
- Bridge Condition: Poor
- Closed Bridge
- Roads
- Railroads
- ▭ Municipal Boundaries

## Pavement Conditions

- Excellent
- Fair
- Good
- Poor

Source data: Berks County Planning Commission GIS, Berks County GIS/IS, Berks County Mapping, Berks DES, PennDOT

Published by the Berks County Planning Commission

BAB 6/22

