




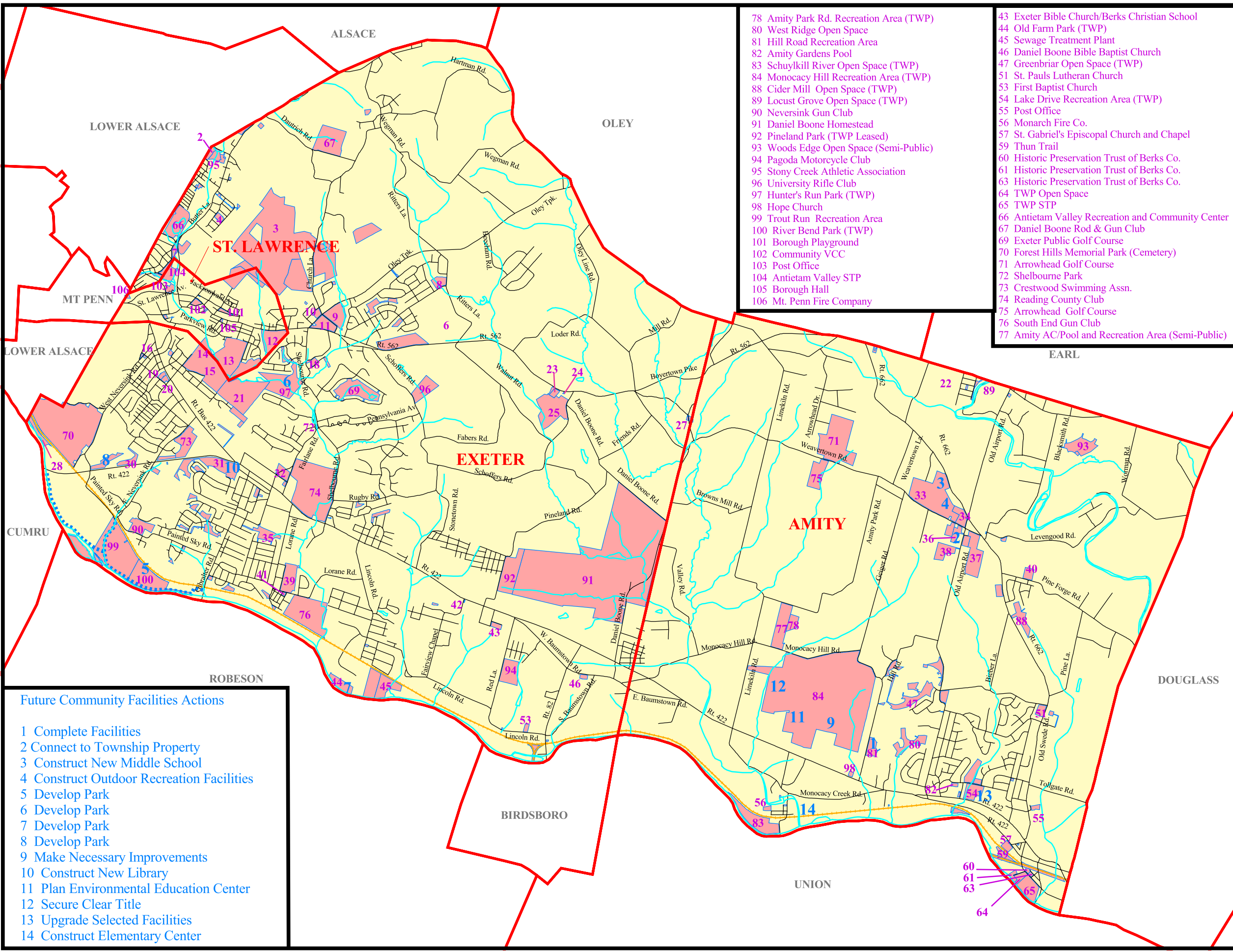
Community Facilities The Joint Comprehensive Plan For St. Lawrence, Exeter and Amity, Berks County

-  Railroads
-  Bicycle Path
-  Community Facility

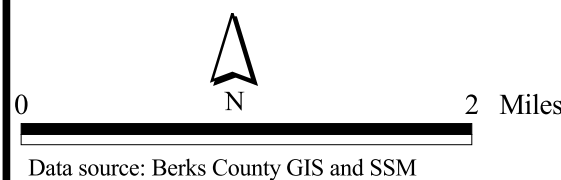
- 1 School Business Dept.
- 2 Antietam JR. -Sr. High School
- 3 St. Lawrence Watershed
- 4 Mountain Park (TWP)
- 6 St. Catherine's R. C. Church
- 7 Butter Lane Park
- 8 Farming Ridge Park (TWP)
- 9 Schwarzwald Lutheran Church
- 10 Schwarzwald UCC
- 11 Jacksonwald Elementary School
- 12 Central Catholic Stadium
- 13 Lausch Elementary School
- 14 Exeter Community Park
- 15 Jr. and Sr. High Schools
- 16 Reiffon Fire Co.
- 17 Reiffon Fire Co.
- 18 School Bus Depot
- 19 School Administration Bldg
- 20 Reformation Church Lutheran
- 21 Reiffon School
- 22 Locust Grove Recreation Area (TWP)
- 23 Stonersville Fire Co.
- 24 Grace Baptist Church
- 25 Little League Fields
- 26 Exeter Friends Meeting House
- 27 Exeter Friends Meeting House
- 28 Berks County Conservancy
- 29 Exeter Friends Meeting House
- 30 Crestwood Park (TWP)
- 31 Exeter Library/Dunn Community Center
- 32 Exeter Twp. Bldg. and Ambulance Assn.
- 33 Weavertown Rd. Park (TWP)
- 34 St. Pauls UCC
- 35 Lorane Hollow Park
- 36 Municipal Bldg. & Myron S. Wheeler Recreation Area
- 37 Amity Primary and Intermediate Centers
- 38 Old Airport Rd. Open Space (TWP)
- 39 Lorane Elementary School
- 40 Amity Fire Co.
- 41 Lorane Chapel
- 42 Love Faith Chapel Christian Assembly

- 78 Amity Park Rd. Recreation Area (TWP)
- 80 West Ridge Open Space
- 81 Hill Road Recreation Area
- 82 Amity Gardens Pool
- 83 Schuylkill River Open Space (TWP)
- 84 Monocacy Hill Recreation Area (TWP)
- 88 Cider Mill Open Space (TWP)
- 89 Locust Grove Open Space (TWP)
- 90 Neversink Gun Club
- 91 Daniel Boone Homestead
- 92 Pineland Park (TWP Leased)
- 93 Woods Edge Open Space (Semi-Public)
- 94 Pagoda Motorcycle Club
- 95 Stony Creek Athletic Association
- 96 University Rifle Club
- 97 Hunter's Run Park (TWP)
- 98 Hope Church
- 99 Trout Run Recreation Area
- 100 River Bend Park (TWP)
- 101 Borough Playground
- 102 Community VCC
- 103 Post Office
- 104 Antietam Valley STP
- 105 Borough Hall
- 106 Mt. Penn Fire Company

- 43 Exeter Bible Church/Berks Christian School
- 44 Old Farm Park (TWP)
- 45 Sewage Treatment Plant
- 46 Daniel Boone Bible Baptist Church
- 47 Greenbriar Open Space (TWP)
- 51 St. Pauls Lutheran Church
- 53 First Baptist Church
- 54 Lake Drive Recreation Area (TWP)
- 55 Post Office
- 56 Monarch Fire Co.
- 57 St. Gabriel's Episcopal Church and Chapel
- 59 Thun Trail
- 60 Historic Preservation Trust of Berks Co.
- 61 Historic Preservation Trust of Berks Co.
- 63 Historic Preservation Trust of Berks Co.
- 64 TWP Open Space
- 65 TWP STP
- 66 Antietam Valley Recreation and Community Center
- 67 Daniel Boone Rod & Gun Club
- 69 Exeter Public Golf Course
- 70 Forest Hills Memorial Park (Cemetery)
- 71 Arrowhead Golf Course
- 72 Shelbourne Park
- 73 Crestwood Swimming Assn.
- 74 Reading County Club
- 75 Arrowhead Golf Course
- 76 South End Gun Club
- 77 Amity AC/Pool and Recreation Area (Semi-Public)



- ### Future Community Facilities Actions
- 1 Complete Facilities
 - 2 Connect to Township Property
 - 3 Construct New Middle School
 - 4 Construct Outdoor Recreation Facilities
 - 5 Develop Park
 - 6 Develop Park
 - 7 Develop Park
 - 8 Develop Park
 - 9 Make Necessary Improvements
 - 10 Construct New Library
 - 11 Plan Environmental Education Center
 - 12 Secure Clear Title
 - 13 Upgrade Selected Facilities
 - 14 Construct Elementary Center



Data source: Berks County GIS and SSM



Spotts, Stevens and McCoy, Inc.
1047 N. Park Rd.
Reading, PA 19610-0307
Tel: 610-621-2000 Fax: 610-376-6950

11/15/01

g:\projects\w6000\w6128\w6128004\projects\w6128_004.apr